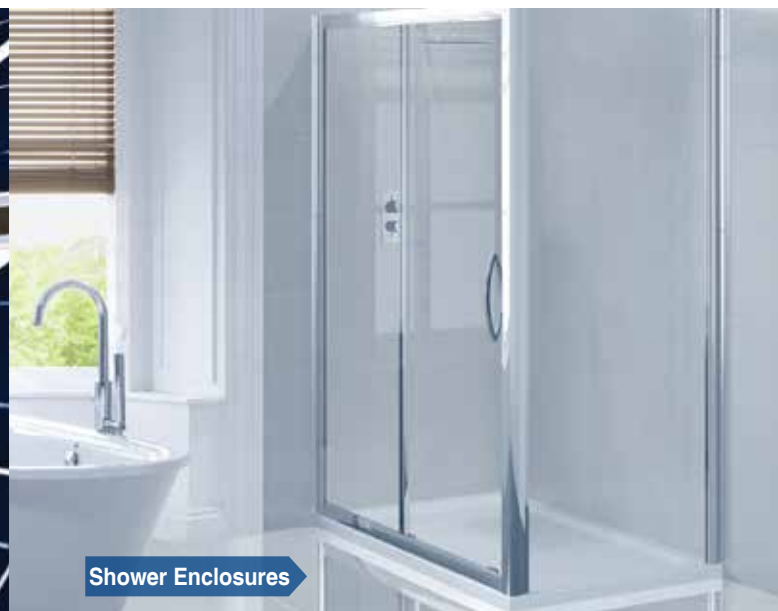




Verandas

Solar Panels



Shower Enclosures



Balustrades



Technology for the...
Cleaning, Protection & Maintenance of
Glass & Other Hard Surfaces



With Water & Soil Repellent Technology

REPEL™
GLASS CLEANER 946 ml (32 FL. OZ.)

REPEL is patent-pending glass & surface cleaner cleans glass & other surfaces to a streak free shine and simultaneously bonds a nano-scale "invisible barrier" to the surface that repels water, soil, grime & stains for less re-soiling and easier next-time cleaning.

REPEL reduces the adhesion & build-up of hard water spots, oil, grime, smudges, fingerprints, soap scum and mineral deposits. REPEL is great on windows, doors, showers, mirrors, tables, sinks, tubs, tile, counters & more! Once you use REPEL, you'll never use an old-fashioned glass cleaner again! Available in RTU. (Ready to Use)

Properties

- Active Ingredients : 1 - Octadecanaminium N, N-Dimethyl - N [3-trimethoxysilyl] propyl] chloride
- Flash Point : None (Non-flammable) • Odor : Pleasant Fragrance
- Color : Tinted - slightly cloudy (normal) • pH : 5.0 - 7.0 • Viscosity : Consistency of water
- Foam : Slight when shaken or sprayed • Abrasives : None
- Solubility : Complete with water • Storage Stability : Minimum 2 years
- Freeze/Thaw Stability : Good • Packaged : 946 ml. (32fl. oz.)



Keeps Surfaces Sanitary!

SANI-SHIELD®
3-IN-1 SURFACE CARE 946 ml (32 FL. OZ.)

CLEANS everyday organic soil with the oxidizing power of hydrogen peroxide... foodstuff, soap scum, grease & oil... on tables, counters, appliances, sinks, tubs, tile, toilets, faucets, mirrors, office equipment, telephones, computers & more.

SHIELDS surfaces against the adhesion & buildup of inorganic soil... stains, rust, lime scale & hard water mineral deposits... for easier next-time cleaning.

PROTECTS surfaces with an invisible microbe-resistant barrier coating on which odor causing bacteria, mold and mildew will not grow in between regular cleaning. U.S. Patent 6,994,890 - Int'l. Patents Pending

Properties

- Active Ingredients : Hydrogen Peroxide & Organosilane Quaternaries
- Flash Point : None (water-based) • Odor : Pleasant Fragrance
- Color : Clear • pH : 3.0 - 5.0 • Viscosity : Consistency of water
- Abrasives : None • Solubility : Complete with potable water
- Storage Stability : Minimum 2 years • Freeze/Thaw Stability : Good



Clean

Unelko's surface cleaners & cleansers deep clean surfaces such as sinks, tubs, showers & counters to a sparkling shine without scratching or dulling the surface.

Protect

Unelko's 3-D Nano-tech, long lasting "invisible" polymer coating seals, polishes & protects all glass, porcelain & ceramic surfaces against hard water stains, dirt & grime.

Maintain

Unelko's unique VOC Free "Dual-Action" products clean & renew surfaces in 1-step. These almost self cleaning technologies repel hard water spots, oil, dust & fingerprints.

Free of Volatile Organic Compounds, user safe & environmentally friendly.

Untreated



Water, Soil, Dirt, Grime, Soap Scum & Minerals penetrate the pores & buildup on untreated surfaces.

Untreated



Unelko's 3-D Nano-tech products repel water, soil, stains and buildup for dramatically easier cleaning & improved appearance.

Imported & Marketed By :



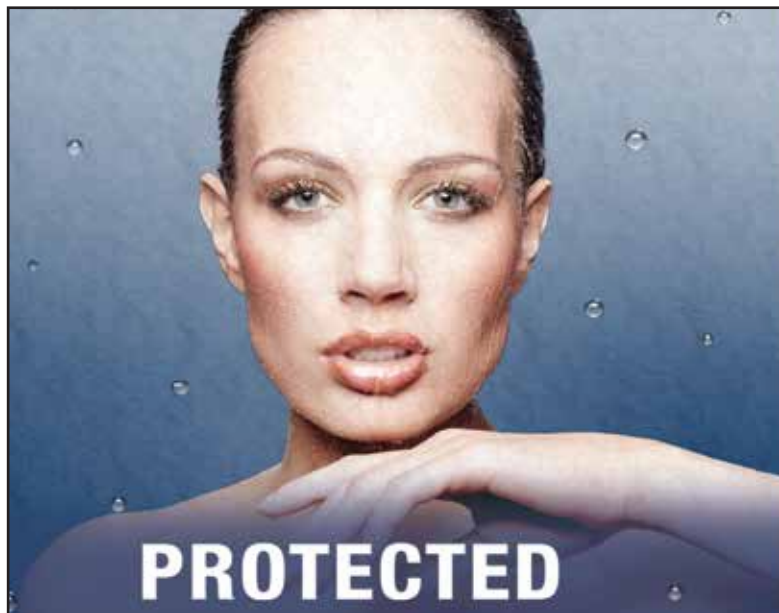
REGISTERED & CORPORATE OFFICE:
207/1, "Astral House", B/h. Rajpath Club, Off. S.G. Highway,
Ahmedabad-380 059, Gujarat, India.
Phone : +91 79 6621 2000
Fax : +91 79 6621 2121
Website : www.unelko.com

Contact :
AVINASH SHUKLA
Senior Manager - Marketing
Mobile : +91 90999 03048
E-mail : avinash.shukla@advancedadhesives.in

Follow us on : App Available on :

Spectrum : 098240 97300





PROTECTED



UNPROTECTED



Shower Enclosures



Balustrades



Architectural Glass



Automotive/Marine/Aircraft

PIONEERING "EASY CLEAN" NANOSCALE TECHNOLOGY

INVISIBLE SHIELD® represents a major breakthrough in Surface Coating Technology and is the leader and professional choice for the preservation, enhancement and preventive cleaning of all glass, porcelain and ceramic surfaces. Invisible Shield is a high performance, nanoscale polymer coating that instantly and durably bonds to glass. It seals, polishes and protects glass with a long lasting "barrier" coating that repels water, soil, stains and minerals and prevents corrosion for easier maintenance and improved appearance.

Use Invisible Shield on Windows, Flat Glass, Architectural Glass, Facades, Shower Enclosures, Mirrors, Sandblasted Glass, Partitions, Solar Panels, Automotive and Marine Glass to keep them protected against exposure from the elements.

COMPLETE GLASS & SURFACE CARE

Offering patented "Dual-Action" cleaners that simultaneously clean and protect surfaces and remarkable stain removers and restorers that make worn glass look brand new.

SAVE TIME, LABOR & EFFORT

- ✓ Repels Water, Soil, Stains & Minerals
- ✓ Lasting Protection Against Corrosion
- ✓ Wear & Fine Scratches
- ✓ Makes Cleaning Faster & Easier
- ✓ Eliminates The Need for Harsh Chemicals & Abrasives
- ✓ Saves Time, Labor & Chemicals
- ✓ Saves Work, Damage & Replacements
- ✓ Easily Applied & Easily Renewed
- ✓ Restores Glass & Improves Appearance
- ✓ UV, Weather, & Abrasion Resistant
- ✓ Long Lasting Protection-Guaranteed

ULTIMATE PROTECTION FOR :

- Windows
- Facades
- Verandas
- Shower Enclosures
- Solar Panels
- Porcelain Sinks/Tubs
- Automotive/Marine/Aircraft
- Architectural Glass
- Balustrades
- Partitions
- Sandblasted Glass
- Decorative Glass
- Ceramic Tile

HERE'S HOW INVISIBLE SHIELD WORKS :

Invisible Shield® forms a protective barrier on the surface so that dirt, grime and minerals won't stick! Surfaces can be easily maintained and renewed for a lifetime with Invisible Shield and other aftercare products.



Q & A

Why Use Invisible Shield®?

Surfaces have microscopic pores that trap dirt, grime, stains and minerals. By shielding surfaces with invisible shield, soil and buildup is dramatically reduced for easier cleaning, without the use of harsh chemicals or abrasives.

How Is Invisible Shield® Applied?

Invisible Shield is wiped or sprayed onto the surface and then polished clear to a brilliant shine. It is micron thin, will never crack, peel or discolor and 100% optically clear.

How Long will Invisible Shield® last?

Invisible Shield is extremely durable and can last for up to 10 years on most exterior glass surfaces. Like all coatings or paints, durability is dependent upon the initial application, degree of exposure, maintenance and the ongoing abrasion to which a surface is subjected to. Invisible Shield can be easily renewed without removing the prior coating to rejuvenate and refresh its shielding and protective benefits. Invisible Shield is guaranteed to prevent the adhesion and build-up of foreign matter and keeps glass looking like new for years.

Unelko Corporation is recognized as the leader in Advanced Surface Care Technologies and the inventor of the **Clean-X®** Invisible Shield line of products. They also manufactured the world famous **Rain-X®** and **Repcon®** products for Improved Visibility and Safety while driving or flying.

MIRACLE SCRUB®

SURFACE CLEANSER 473 ml. (16 FL. OZ.)

MIRACLE SCRUB removes the toughest stains, soap scum, rust and hard water mineral deposits in kitchens, baths and throughout the home. **MIRACLE SCRUB** deep cleans sinks, tubs, showers and counters to a sparkling shine without scratching or dulling the surface. Perfect for glass, porcelain, ceramics and other hard surfaces like granite and tile. Used by professionals. The ultimate stain & buildup remover... guaranteed!

Properties

- Active Ingredients : Finely-divided crystalline silica, soap & detergent
- Flash Point : Non-flammable - Water based
- Odor : Mild (Wintergreen)
- Color : White to off-white
- pH: 3.0
- Viscosity : Consistency of cream
- Specific Gravity : 1.15
- Storage Stability : Minimum 2 years
- Freeze/Thaw Stability : Good
- Packaged : 473 ml. (16 fl.oz.)



LIMESCALE REMOVER

946 ml (32 FL OZ.)

LIMESCALE REMOVER is a unique, biodegradable, chemistry that effectively removes limescale, calcium, hard water minerals, soap scum and body oils from hard surfaces. **CLEANS** glass, fiberglass, plexiglass, ceramic, stainless steel, brass, chrome, porcelain and cultured marble surfaces... showers, bathtubs, sinks, wall & counter tile. **DISSOLVES** soap scum, water spots and other organic and inorganic soil without the need for scraping & scrubbing.

Properties

- Active Ingredients : Ethylene glycolmonobutylether / surfactant complex
- Flash Point : None (water-based)
- Color : Clear
- pH: 3.0
- Viscosity : Consistency of water
- Abrasives : None
- Solubility : Complete with potable water
- Storage Stability : Minimum 2 years
- Freeze/Thaw Stability : Good
- Packaged : 946 ml. (32fl. oz.) ready-to-use spray bottles

